

Master Flash®

4-2014

Sealing pipes, cables, conduit, wire, solar, refrigeration lines, venting. etc.,.



Seal In Or Seal Out • All Weather Resistant
Variety Of Standard Styles And Custom Options Available



Accesorios de Venta en INNOVACIÓN EN ACERO

Oficina de ventas: Av. Cafetales 1792 Int-15 (Plaza Trébol) Haciendas de Coyoacán C.P. 04970 México D.F.
Tels. (+521) 55 5684 4762 (+521) 55 5673 2441 Lada sin costo: (01 800) 837 9771

Master Flash®

Sealing pipes, cables, conduit, wire, solar, refrigeration lines, venting. etc.,.

ISO Quality, Price & Availability / TWO COMPOUNDS / 11 Sizes / 10 Colors

	EPDM 70 hour @ 500 pphm	SILICONE 70 hour @ 500 pphm
ADVANCED OZONE RESISTANCE tested to...		
HIGH TEMPERATURE RESISTANCE Tested to		
Intermittent	+135°C (+275°F)	+260°C (+500°F)
Continuous	+100°C (+212°F)	+225°C (+437°F)
LOW TEMPERATURE RESISTANCE tested to...	- 55°C (-67°F)	-74°C (-101°F)
COMPRESSION SET minimum...	25%	50%

*Complete specification data and testing methods are available upon request.



Design Excellence

Aztec's flexible design meets all roofing needs. Sleeve flexibility accommodates vibration and pipe movement caused by expansion contraction. The soft aluminum base easily conforms to most metal roof profiles.



Weather Protection

Made of E.P.D.M. or Silicone, these flashings are compounded specifically for maximum resistance to weathering due to ozone and ultraviolet light.



Base Flexibility

The base is designed to form a seal on most panel configurations and roof pitches regardless of pipe location.



Easy On-Site Customization

Fast, one piece construction allows for easy on-site installation in usually 5 minutes.



Modification Made Simple

Easy to see pipe diameters make for painless on-site installation.

Accesorios de Venta en INNOVACIÓN EN ACERO

Oficina de ventas: Av. Cafetales 1792 Int-15 (Plaza Trébol) Haciendas de Coyoacán C.P. 04970 México D.F.
Tels. (+521) 55 5684 4762 (+521) 55 5673 2441 Lada sin costo: (01 800) 837 9771



SEAL IT RIGHT THE FIRST TIME!



DE VENTA EN



www.innovacero.com

Master Flash®



The only ICC listed flashing for the Metal Building Industry with a 35 year warranty

- 11 Sizes / Designed for 1/8" to 28-1/2" (3-723mm) diameter pipes.
- On-site customization.
- Designed for 1/4" to 13" (6-330mm) diameter pipes.
- Pipe diameters can be seen clearly for proper pipe fitting.



Standard Master Flash®



- Two Compounds / EPDM / Silicone
- 11 Sizes / Designed for 1/8" to 28-1/2" (3-723mm) diameter pipes.
- 10 Colors
- Easy on-site installation in usually 5 minutes.
- Sleeve flexibility accommodates vibration and pipe movement caused by expansion contraction.
- The soft aluminum base easily conforms to most metal roof profiles.
- Pipe diameters can be seen clearly for proper pipe fitting.



Extreme Angle Master Flash®



- Two Compounds / EPDM / Silicone
- Designed for 1/4" to 5-3/4" (6-146mm) diameter pipes.
- Easy on-site installation in usually 5 minutes.
- The built in 40° degree pitch allows to handle any extreme roof pitch (35° - 65°)
- Sleeve flexibility accommodates vibration and pipe movement caused by expansion contraction.



Fix-A-Flash Master Flash® Specifically designed for the Metal Roofing Industry
Oversized hole in your roofing? Aztec has the answer...

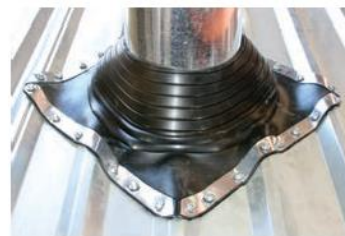
20
YEAR
WARRANTY



Large Base Dimension

The base is designed for a oversized hole cut for your pipe flashing

- Designed for 0" to 15" 2" (0-381mm) diameter pipes.
- On-site customization.
- Designed Base 19-1/2" (495mm)
- Pipe diameters can be seen clearly for proper pipe fitting.



Multi-Flash Square Vent Master Flash®

20
YEAR
WARRANTY



Two Applications • One Design • Multiple Functions

- Black EPDM
- Designed for Standard 3/8" to 5" (20-125mm) diameter pipes.
- Designed for Retrofit 1-1/2" to 4" (38-101mm) diameter pipes.
- Stainless steel gripper to secure a retro custom fit.
- Gripper available upon request



Multi-Flash Master Flash®

20
YEAR
WARRANTY



"Two Flashings in one"

- Two Compounds / EPDM / Silicone
- 11 Sizes / Designed for 1/8" to 28-1/2" (3-723mm) diameter pipes.
- Smooth cut is intended to eliminate use of razor blades.
- Stainless steel gripper to secure a retro custom fit.
- Gripper available upon request



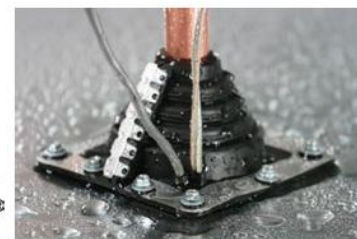
Multi-Port Master Flash®

20
YEAR
WARRANTY



"Standard or a Retrofit Applications"

- Two Applications / EPDM / Silicone
- One Design / Designed for 1/4" to 2-3/4" (6 - 70mm) diameter pipes.
- Up to 4 Cables or Wires per flashing.
- Accommodates FOUR 1/4" (6mm) lines and 1 pipe 1/4" - 2-3/4" (6 - 70mm)
- Single stainless steel gripper to secure retrofit applications only.

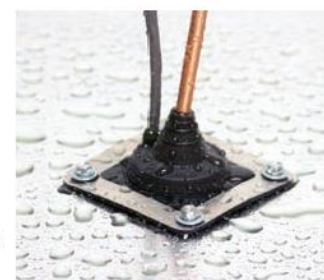


Mini-Port Master Flash®

20
YEAR
WARRANTY



- Two Compounds / EPDM / Silicone
- Accommodates:
ONE 0" - 1-15/16" (0 - 49mm) Pipe
TWO 3/8" (9.6mm) pipe / cable
TWO 3/4" (20mm) pipe / cable
- Sleeve flexibility accommodates vibration and pipe movement caused by expansion contraction.
- The soft aluminum base easily conforms to most metal roof profiles.



Retrofit Master Flash®

20
YEAR
WARRANTY



- Two Compounds / EPDM / Silicone
- 3 Sizes / Designed for 1/2" to 16-1/4" (12-412mm) diameter pipes.
- Easy to see pipe diameters make for painless on site customization.
- Easily Installed Fastener Snaps Included.



Solar Multi-Port - CT Master Flash® 5 Port Design for Clay Tile Roofs

No Fasteners Required! Just WeatherMaster™ Sealant

20
YEAR
WARRANTY



- Accommodates:
ONE 0" - 1-15/16" (0 - 49mm) Pipe
TWO 3/8" (9.6mm) pipe / cable
TWO 3/4" (20mm) pipe / cable
• 4-1/2" (114mm) Base
- Up to 4 Cables or Wires per flashing
- Extra ports to accommodate Copper pipe and electrical cabling
- Easy install for Solar applications



Accesorios de Venta en INNOVACIÓN EN ACERO

Solar Multi-Port - MR Master Flash®

20
YEAR
WARRANTY



5 Port Design for the Metal Roofing Industry

- Accommodates:
 - ONE 0" - 1-15/16" (0 - 49mm) Pipe
 - TWO 3/8" (9.6mm) pipe / cable
 - TWO 3/4" (20mm) pipe / cable
- 4-1/2" (114mm) Base
- Up to 4 Cables or Wires per flashing
- Extra ports to accommodate Copper pipe and electrical cabling
- Easy install for Solar applications



Square Vent Master Flash®

20
YEAR
WARRANTY



- 2 Sizes // EPDM / Designed for 2-1/2" to 5" (63-127mm) diameter pipes.
- Made to withstand the damaging effects of ultraviolet light and Ozone.
- Easy Install Snaps Included • Specially designed for square vent applications
- Sleeve flexibility accommodates vibration and pipe movement caused by expansion/contraction.

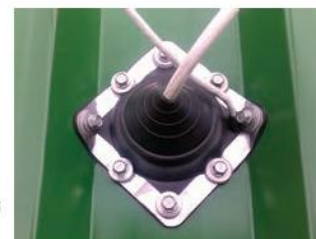


Middy Master Flash® One Design - Handling Many Jobs "2 Port Design" Multiple Functions

20
YEAR
WARRANTY



- Two Compounds / EPDM / Silicone
- Accommodates:
 - ONE Pipe 0" - 2" (0 - 50mm)
 - ONE 3/8" (9.6mm) pipe / cable
- Fast, one piece construction allows for easy on-site install in usually 5 minutes.



Universal Master Flash®



20
YEAR
WARRANTY



- All Around Performance
- Two Compounds / EPDM / Red and Grey Silicone
- 9 Sizes / Designed for 1/4" to 19" (6 - 482mm) diameter pipes.
- 11 Colors
- Easy on-site customization can accommodate all normal installations.



Solar-Flash Master Flash®

20
YEAR
WARRANTY



- Specifically designed for solar applications
- Two Compounds / EPDM / Silicone
- Designed for 3/4" (19mm) to 1" (25mm) diameter pipes.
- Pre-cut hole for pipe sizes 3/4" (19mm) to 1" (25mm) allowing for minimal on-site preparation and assembly.
- The pitch canal allows for maximum flexibility, easily accommodating up to a 60° degree pitch without affecting performance.



Universal Retrofit Master Flash®

20
YEAR
WARRANTY



- Two Compounds / EPDM / Silicone
- 3 Sizes / Designed for 3/4" (19mm) to 10" (254mm) diameter pipes.
- Fast, one piece construction allows for easy on-site installation in usually 5 minutes.



Electrical Mast Connection Master Flash®

20
YEAR
WARRANTY



- Available in EPDM
- Designed for 0" to 5-3/8" (0-136mm) diameter pipes.
- The built in 20° pitch allows adaptability to almost any roof pitch including 45°
- Pipe diameters can be seen clearly for proper pipe fitting.



Residential Master Flash® "Environmentally safe" lead free aluminum base"



- Two Compounds
- 4 Sizes / Designed for 1/4" to 18" (6.3-457mm) diameter pipes.
- The pull tab design and easy smooth tear grooving is intended to eliminate razor knives and allow for a circular hole.
- The built in 20° pitch allows adaptability to almost any roof pitch including 45°
- Self extinguishing feature enables use with type "B" vents



Res-Lead Master Flash® "Powder coated Safe-Lead metal base."



- Two Compounds
- 4 Sizes / Designed for 1/4" to 18" (6.3-457mm) diameter pipes.
- The pull tab design and easy smooth tear grooving is intended to eliminate razor knives and allow for a circular hole.
- The built in 20° pitch allows adaptability to almost any roof pitch including 45°
- Self extinguishing feature enables use with type "B" vents

Solar Multi-Port - LD Master Flash® "Powder coated Safe-Lead metal base."



- Accommodates:
ONE 0" - 1-15/16" (0 - 49mm) Pipe • TWO 3/8" (9.6mm) pipe / cable
TWO 3/4" (20mm) pipe / cable • 16" x 19-1/4" (410 x 490mm) Lead Base
- Up to 4 Cables or Wires per flashing
- Extra ports to accommodate copper pipe and electrical cabling
- Easy install for Solar applications

Solar Multi-Port - AL Master Flash® "Environmentally safe" lead free aluminum base"



- Accommodates: ONE 0" - 1-15/16" (0 - 49mm) Pipe • TWO 3/8" (9.6mm) pipe / cable
TWO 3/4" (20mm) pipe / cable • 17-3/4" x 24" (450 x 600mm) Aluminum Base
- Up to 4 Cables or Wires per flashing
- Extra ports to accommodate copper pipe and electrical cabling
- Easy install for Solar applications

Box Gutter Expansion Joint Master Flash®



Features:

- 9 inch wide EPDM linear flashing (.059 thick)
- EPDM Rubber encapsulated expandable metal sides
- Made of grey ozone resistant EPDM
- Available in 3 foot and 12 foot lengths

Applications:

Transition Walls • Parapet Walls • Stepped Roofs
Corrugated Metal Roofs • Roof Penetrations • Expansion Joint



(SLF) Stretchable Linear Flash Master Flash® Roof Flashing System Stretch and Seal



Features:

- 11" (280mm) wide
- 1.7mm thick Grey EPDM linear flashing
- Made of grey ozone resistant EPDM
- 33", 12' and 33' Lengths available

Applications:

- Transition Walls
- Parapet Walls • Stepped Roofs
- Corrugated Metal Roofs
- Roof Penetrations
- Square Vents
- Large Pipes

